

# SITE INFORMATION DOCUMENT - LOC5752

## The Production must always:

- supply evidence of Public Liability Insurance with a minimum cover of £5 million.
- Produce a Health and Safety Risk Assessment to cover the action on site.
- Pay the location hire fee before the first day of access.
- Pay a Damage Deposit ranging from £500 to £10,000 based on the amount of areas accessed/type of property/length of time on site.

## When filming on site Production is expected to:

- Never remove, cover or block emergency signage.
- Remove all waste it creates at the end of each day and within the times of hire period. (Additional charges may occur if premises are not left in satisfactory condition).
- Supply security personnel to man the doors to the premises at all times.
- Never touch machinery, hoists, control panels or open any shut cupboard.
- Avoid identifying the owner, any company, personnel, visitors or tenants, on screen in any manner by reputation, logos, colour schemes, personnel uniforms, badges, or banners unless specific permission has been obtained.
- Not to cover smoke detectors without consent and then to ensure they are uncovered after the shot.
- Supply personnel to check the location with the owner after the shoot and complete the Sign Off Sheet.

## Terms

- Cancellation fees are 100% if cancelled after both parties have signed the Location hire Agreement.
- Power is charged for meter readings must be taken.
- Film days are 12 hours - Photoshoot days are 10 hours - Unit base is up to 24 hours

**Disclaimer:** All data, imagery, and information is provided without warranty or any representation of accuracy, timeliness or completeness. The content of the information is solely a guideline and is subject to constant change.

## DESCRIPTION OF PROPERTY

A music venue and cocktail bar spread across two floors. A bar on the ground floor, night club on the first floor.

## PROPERTY

Main rooms available	2
Number of floors	2
Roof access	No
Shared site/tenants	No
Toilets can be used	Yes
Electrical supply on site	Yes
Heating	Yes
Noise from schools/transport	School = non. Transport minimal
Ceiling height 20ft +	TBC
WiFi	Yes
Drive inside building	No

Is sound proof	Yes
Floor covering required	Yes
Specific H&S or PPE requirements	No
Smoking policy	No
Directional signage can be put up	Yes

## ACCESS

Site visit requirements:	n/a
Permitted hours of access	24
Areas off limits	None
Width / height restriction	TBC
Disabled access	Ground floor Yes / 1st & 2nd floors No
Lift	No
Max persons on site	400
Evacuation procedure	Via fire escape
Any restrictions	n/a

## SET DRESSING can production

Move furniture	Yes
Drill, nail, stick or fix	No
Paint	No
Dig / excavate	No

## LIGHTING

Black out	Yes
Control of lights	Yes
Lighting from outside	Yes

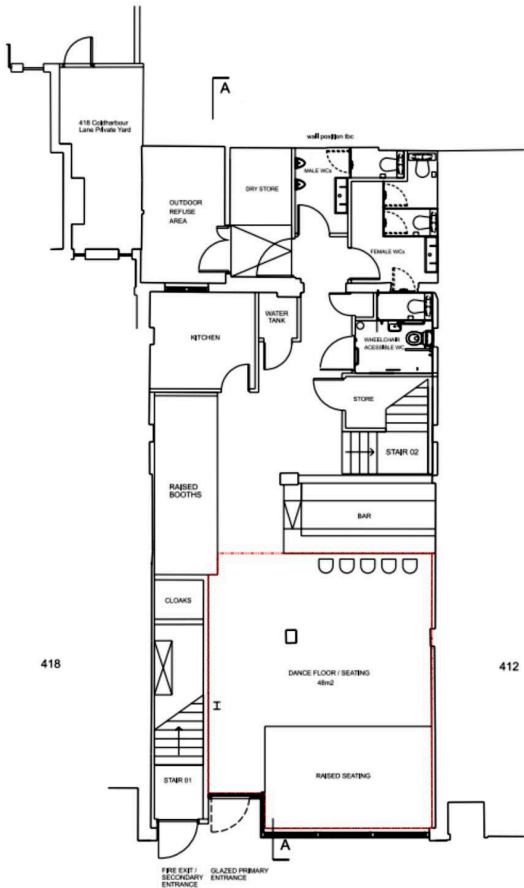
## VEHICLES

Parking on site	No
Parking nearby	Yes

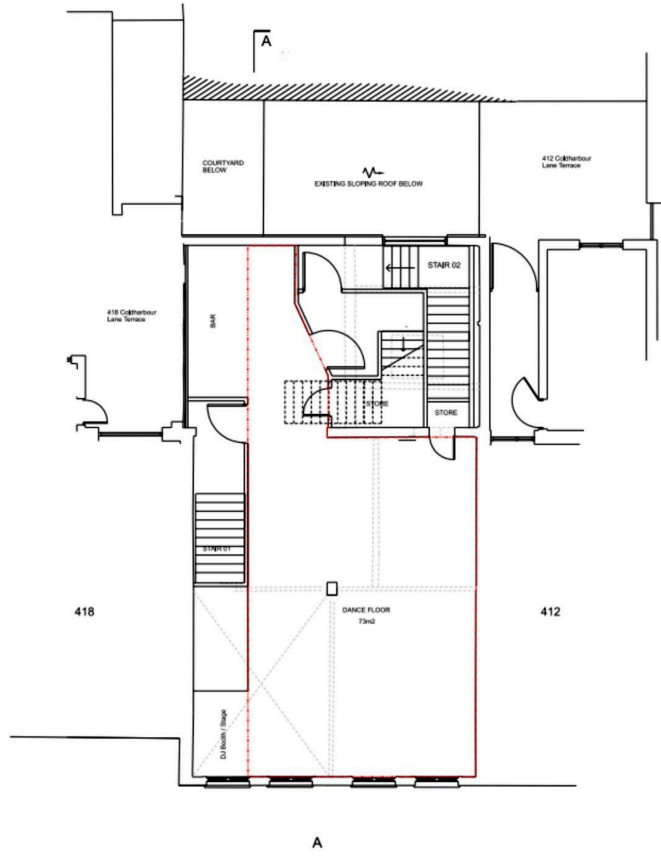
Unit Base	n/a
Speed limit on site	n/a
Local Council	Lambeth

**OWNER WILL CONSIDER ALLOWING**

Animals on site	Yes
Nudity	Yes
Smoking	Yes
Snow / Rain / Wind effects	No
Immoral content / Drug scenes	Yes
Drones	Yes
Haze / Smoke effects	Yes
Naked flame	No



Ground Floor Plan



First Floor Plan

