

# SITE INFORMATION DOCUMENT - Commercial LOC5736

## The Production must always:

- supply evidence of Public Liability Insurance with a minimum cover of £5 million.
- Produce a Health and Safety Risk Assessment to cover the action on site.
- Pay the location hire fee before the first day of access.
- Pay a Damage Deposit ranging from £500 to £10,000 based on the amount of areas accessed/type of property/length of time on site.

## When filming on site Production is expected to:

- Never remove, cover or block emergency signage.
- Remove all waste it creates at the end of each day and within the times of hire period. (Additional charges may occur if premises are not left in satisfactory condition).
- Supply security personnel to man the doors to the premises at all times.
- Touch machinery, hoists, control panels or open any shut cupboard.
- Avoid identifying the owner, any company, personnel, visitors or tenants, on screen in any manner by reputation, logos, colour schemes, personnel uniforms, badges, or banners unless specific permission has been obtained.
- Not to cover smoke detectors without consent and then to ensure they are uncovered after the shot.
- Supply personnel to check the location with the owner after the shoot and complete the Sign Off Sheet.

## Terms

- Cancellation fees are 100% if cancelled after both parties have signed the Location hire Agreement.
- Power is charged for meter readings must be taken.
- Film days are 12 hours - Photoshoot days are 10 hours - Unit base is up to 24 hours

**Disclaimer:** All data, imagery, and information is provided without warranty or any representation of accuracy, timeliness or completeness. The content of the information is solely a guideline and is subject to constant change.

## DESCRIPTION OF PROPERTY

A multi space venue - bar and lounge, basement space, record shop and spacious roof terrace.

## PROPERTY

Main rooms available	Bar and lounge, outside terrace, and basement space
Number of floors	2
Roof access	Upstairs terrace available
Shared site/tenants	No
Toilets can be used	Yes
Electrical supply on site	Yes
Heating	Yes
Noise from schools/transport	No
Ceiling height 20ft +	No
WiFi	Yes
Drive inside building	No
Is sound proof	Yes

Floor covering required	No
Specific H&S or PPE requirements	No
Smoking policy	Outside only
Directional signage can be put up	Yes

## ACCESS

Site visit requirements:	No
Permitted hours of access	Monday, Tuesday: 9:00 am-12:00 am, Wednesday, Thursday: 9:00 am-4:00 pm, Friday: 9:00 am- 1:00 pm
Areas off limits	None
Width / height restriction	None
Disabled access	Ground level access is disabled access
Lift	No
Max persons on site	290
Evacuation procedure	Fire Exit
Any restrictions	18+ if wet hire

## SET DRESSING can production

Move furniture	Yes
Drill, nail, stick or fix	Yes if returned to previous state
Paint	Yes if returned to previous state
Dig / excavate	Yes if returned to previous state

## LIGHTING

Black out	No
Control of lights	Yes
Lighting from outside	Yes

## VEHICLES

Parking on site	No
Parking nearby	Yes
Unit Base	Yes

Speed limit on site	No
Local Council	Tower Hamlets

**OWNER WILL CONSIDER ALLOWING**

Animals on site	Yes
Nudity	Yes
Smoking	Outside
Snow / Rain / Wind effects	Yes
Immoral content / Drug scenes	Yes
Drones	Yes
Haze / Smoke effects	Yes
Naked flame	Yes if supervised

Approximate Gross Internal Floor Area = 360.4 sq m / 3880 sq ft

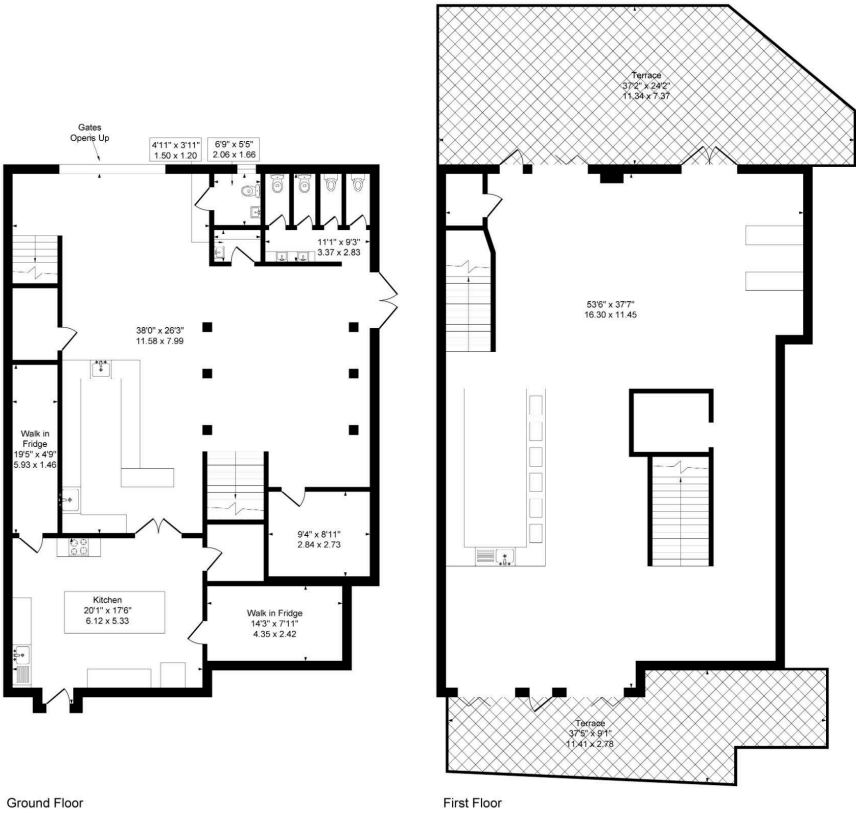


Illustration for identification purposes only, measurements are approximate, not to scale.

