

# SITE INFORMATION DOCUMENT - Commercial

## The Production must always:

- supply evidence of Public Liability Insurance with a minimum cover of £5 million.
- Produce a Health and Safety Risk Assessment to cover the action on site.
- Pay the location hire fee before the first day of access.
- Pay a Damage Deposit ranging from £500 to £10,000 based on the amount of areas accessed/type of property/length of time on site.

## When filming on site Production is expected to:

- Never remove, cover or block emergency signage.
- Remove all waste it creates at the end of each day and within the times of hire period. (Additional charges may occur if premises are not left in satisfactory condition).
- Supply security personnel to man the doors to the premises at all times.
- Touch machinery, hoists, control panels or open any shut cupboard.
- Avoid identifying the owner, any company, personnel, visitors or tenants, on screen in any manner by reputation, logos, colour schemes, personnel uniforms, badges, or banners unless specific permission has been obtained.
- Not to cover smoke detectors without consent and then to ensure they are uncovered after the shot.
- Supply personnel to check the location with the owner after the shoot and complete the Sign Off Sheet.

## Terms

- Cancellation fees are 100% if cancelled after both parties have signed the Location hire Agreement.
- Power is charged for meter readings must be taken.
- Film days are 12 hours - Photoshoot days are 10 hours - Unit base is up to 24 hours

**Disclaimer:** All data, imagery, and information is provided without warranty or any representation of accuracy, timeliness or completeness. The content of the information is solely a guideline and is subject to constant change.

## DESCRIPTION OF PROPERTY

A state of the art studio and production service facility providing a unique space for shoots and events. 165 square metres of shooting space with a mix of white brick, white, plastered and wood panelled walls, large sash windows and a mix of both parquet and concrete flooring.

## STUDIO INFO

Studio / Room	Size sq ft	Cove or colorama	Drive-in access	Natural Daylight	Power	Sound proofed	Ceiling height 20ft +
White studio space	131 sqm total	no	No, second floor	yes	180amps, 63/32amp outlets	no	no
A professional studio kitchen	36 sqm						
Two breakout rooms and a private balcony	35 sqm						

Do you supply:					
Changing area	yes	Toilets	yes	Equipment Hire	no
Client area	yes	Hot drinks	yes	Props to hire	no
Hair /Make-up area	yes	In-house catering	Yes, restaurant downstairs	Lighting grid	no
Wi-fi	Wireless lease line broadband	Kitchen to cook in	Yes, professional studio kitchen		

## ACCESS

Site visit requirements:	9-5 Monday to Friday - can do weekends
Permitted hours of access	
Areas off limits	None
Width / height restriction	
Disabled access	Not to the studio
Max persons on site	50
Any restrictions	

## SET DRESSING

Move furniture	yes
Drill, nail, stick or fix	no
Paint	no
Dig / excavate	no

## LIGHTING

Black out	no
Control of lights	yes
Lighting from outside	yes

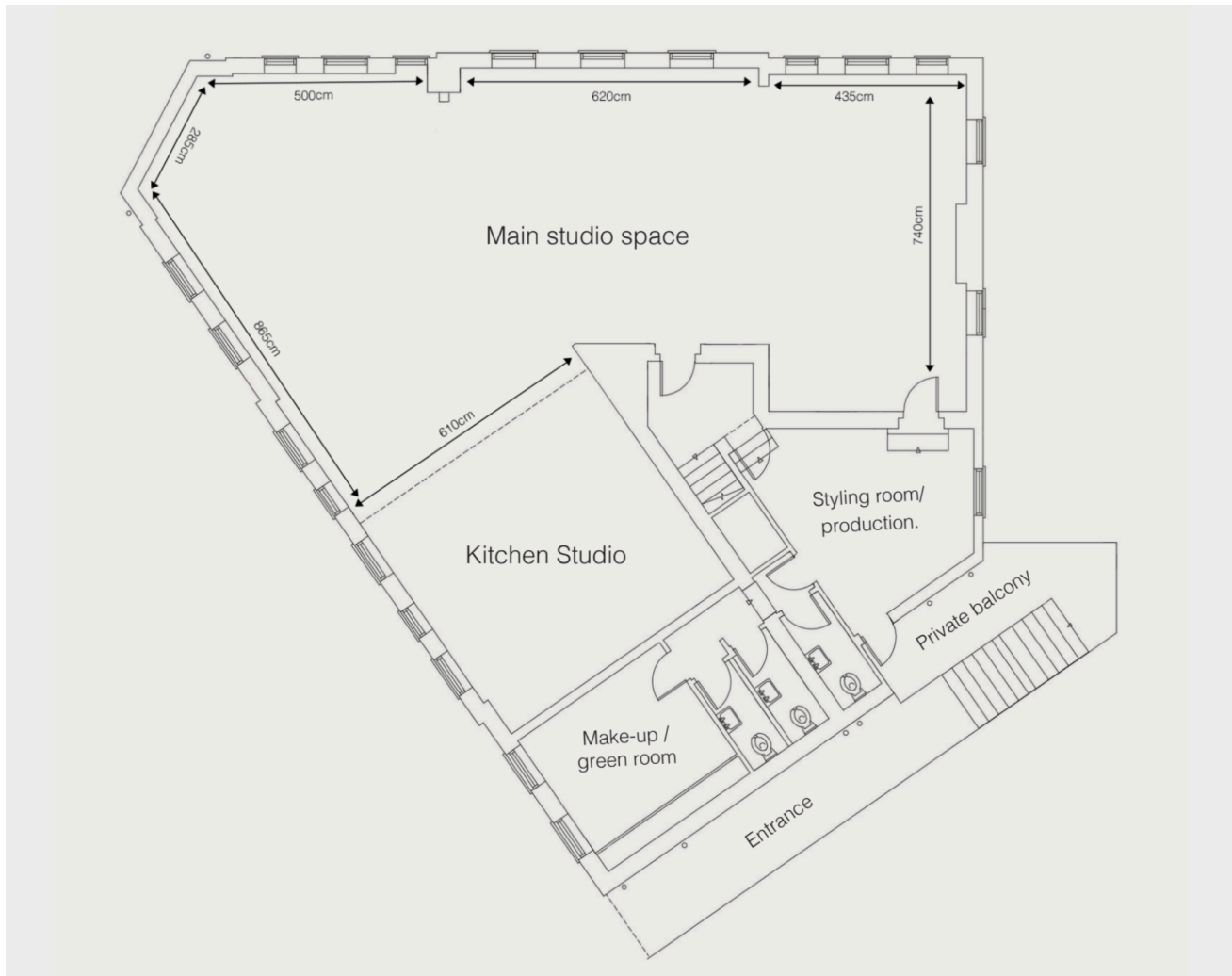
## VEHICLES

Parking on site	On-Street parking and 3 loading bays owned by the Studio.
Parking nearby	yes
Unit Base	Car parks nearby

Speed limit on site	n/a
Local Council	Islington

**OWNER WILL CONSIDER ALLOWING**

Animals on site	yes within reason
Nudity	possibly
Smoking	no
Snow / Rain / Wind effects	no
Immoral content / Drug scenes	possibly
Drones	no
Haze / Smoke effects	no
Naked flame	possibly



Notes