

# SITE INFORMATION DOCUMENT - Natural England

## The Production must always:

- supply evidence of Public Liability Insurance with a minimum cover of £5 million.
- Produce a Health and Safety Risk Assessment to cover the action on site.
- Pay the location hire fee before the first day of access.

## When filming on site Production is expected to:

- Never remove, cover or block emergency signage.
- Remove all waste it creates at the end of each day and within the times of hire period. (Additional charges may occur if premises are not left in satisfactory condition).
- Avoid identifying the owner, any company, personnel, visitors or tenants, on screen in any manner by reputation, logos, colour schemes, personnel uniforms, badges, or banners unless specific permission has been obtained.
- Supply personnel to check the location with the owner after the shoot and complete the Sign Off Sheet.

## Terms

- Cancellation fees are 100% if cancelled after both parties have signed the Location hire Agreement.
- Film days are 12 hours - Photoshoot days are 10 hours - Unit base is up to 24 hours

**Disclaimer:** All data, imagery, and information is provided without warranty or any representation of accuracy, timeliness or completeness. The content of the information is solely a guideline and is subject to constant change.

## PRESERVATION of the ENVIRONMENT and ECOLOGY

- Production is to work within the guidelines of The Wildlife & Countryside Act 1981 and the Conservation of Habitats & Species Regulations 2010 protects many species and persons could be prosecuted if found committing an offence.
- The Client is encouraged to sign up to Albert <https://wearealbert.org/>
- Depending upon the number of persons on site, the scope of works and productions requirements the Client may be asked to provide an environmental report drawn up by an ecologist and one or more ecologists in attendance during access.
- Do not intentionally bring onto site any plant or living organism. Be aware of the ecology.
- Materials harmful to the environment will be strictly monitored.

## SITE ADDRESS : Lindisfarne NNR, Beal Station, Beal TD15 2SP

Lindisfarne National Nature Reserve is one of the most important sites for breeding shorebirds in north-east England covering 65 km of coastline. The reserve of 3,541 hectares protects a long stretch of coast, including the dunes of Holy Island.

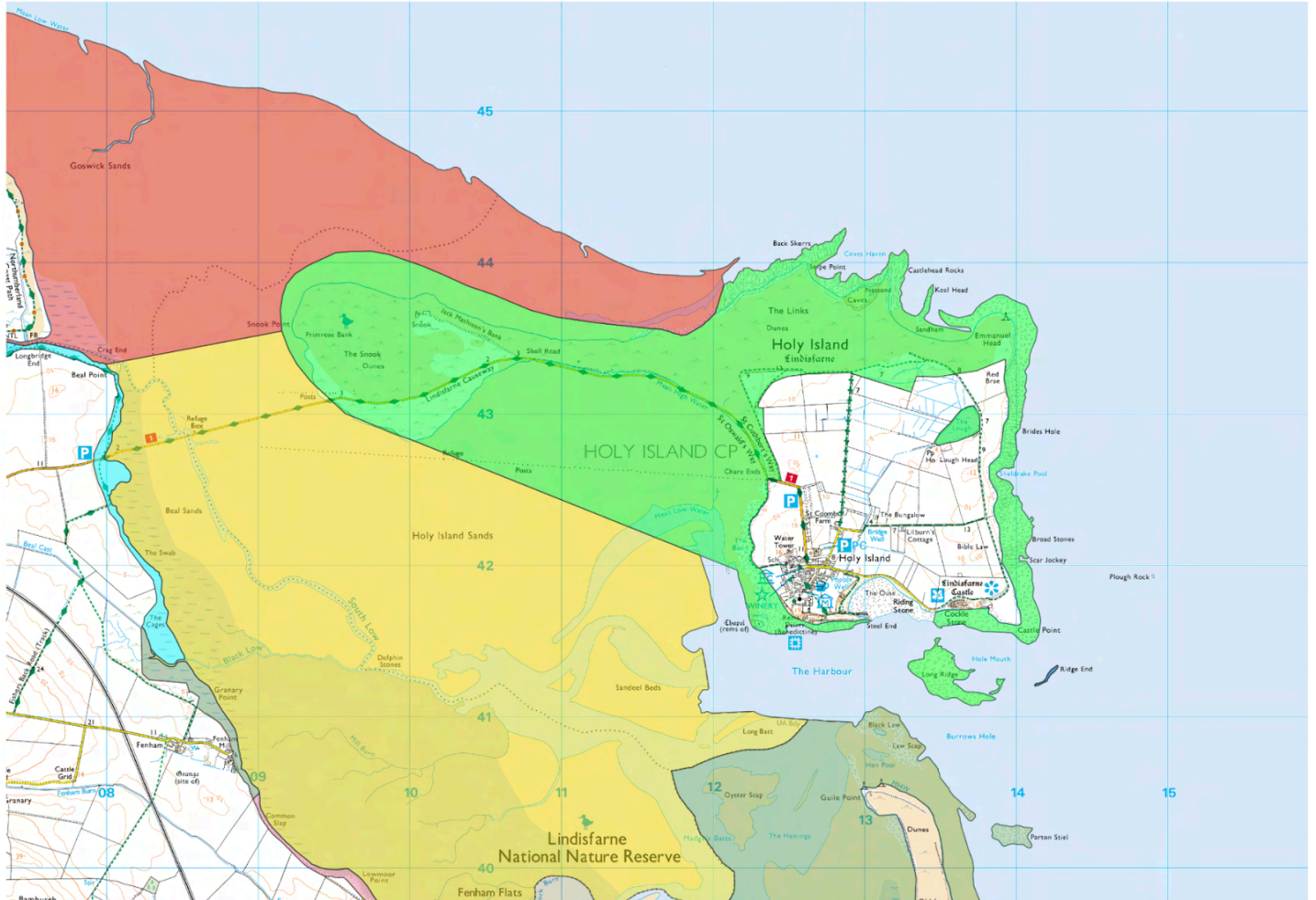
There is a sense of wilderness and tranquillity, with its wide expansive sandy beaches, big skies and the ever present, ever changing North Sea.

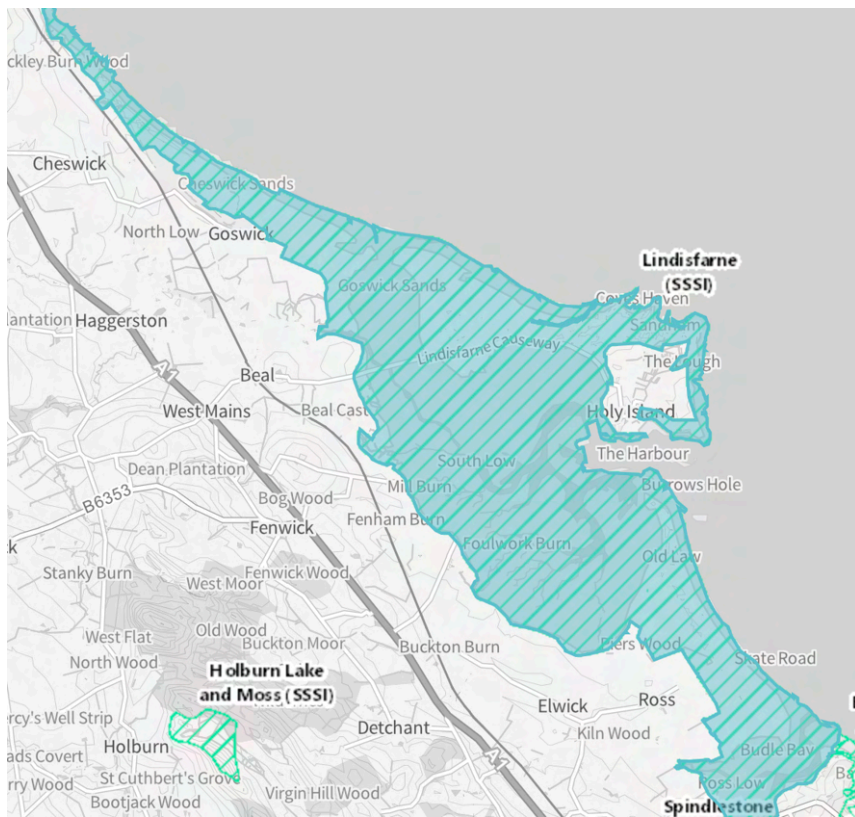
The Reserve also encompasses parts of Holy Island, which can only be reached at low tide across the causeway.

Landscape	Flora	Fauna
<ul style="list-style-type: none"><li>- Intertidal mudflats</li><li>- Sandy beaches</li><li>- Huge skies</li><li>- Seascapes</li><li>- Sand dunes</li></ul>	<ul style="list-style-type: none"><li>- Dune flowers</li><li>- Sea grass</li><li>- Marsh helleborines</li><li>- Marram grass</li></ul>	<ul style="list-style-type: none"><li>- ground nesting birds</li><li>- Migratory birds</li><li>- Butterflies</li><li>- Big lipped snails</li><li>- Ringed Plover</li><li>- Little terns</li><li>- Seals</li></ul>

# NNR can only grant permission for red and yellow area

Holy Island is looked after by The National Trust





<b>TIDES</b>	<p>The causeway is covered by the North Sea at high tide, so you must check the tide times before attempting to drive onto the island. You can find tide timetables online at <a href="https://holy-island.info/lindisfarnecastle/2024/">https://holy-island.info/lindisfarnecastle/2024/</a></p>
<b>GENERAL CARE</b>	<ul style="list-style-type: none"> <li>● Never damage or disturb any habitats, species and biodiversity features.</li> <li>● Be aware of grazing livestock and do not approach, touch, startle or feed the animals.</li> <li>● Dogs on short leads or at heel at all times</li> <li>● Keep to footpaths unless written permission from the Reserve Manager.</li> <li>● Do not disturb wildlife, take/pick any plants or disturb or disturb nests or eggs.</li> </ul>
<b>PUBLIC ACCESS</b>	<ul style="list-style-type: none"> <li>● The production crew understands that they do not have exclusive access. The production may ask politely any person to move if they are in shot or within hearing distance, but the production has no right to enforce this. The crew must behave in a respectful manner to the general public.</li> <li>● Production not to capture the image of any member of the public without their consent.</li> <li>● Children, young people (under 18) and vulnerable adults cannot give their own consent to photography; the consent of a parent or guardian is required.</li> </ul>
<b>SSSI</b>	<ul style="list-style-type: none"> <li>● Lindisfarne NNR is a Site of Special Scientific Interest (SSSI). Consent must be in place before any filming prep takes place on site. Please see map.</li> <li>● Production to engage at their own expense a ecology report to assess the impact their filming may have on the environment. Locality can provide contact details of persons who know this site well.</li> </ul>
<b>FOREIGN SPECIES:</b>	<ul style="list-style-type: none"> <li>● No 'greens' material is to be brought on site. Vegetation/greenery required for set dressing should be obtained from the site, subject to prior agreement with Natural England, and this material subsequently removed from site after filming.</li> <li>● Pirri-pirri bur is a non-native plant which has colonised large areas of duneland. It can be a problem as they cling to clothing and fur; please be careful not to spread it to other sites. Refer to on-site signage for more information.</li> </ul>

<b>SECURITY</b>	<ul style="list-style-type: none"> <li>● The Production is solely responsible for all items of equipment and vehicles.</li> <li>● NE do not accept responsibility for any lost or stolen items.</li> <li>● Security should note the persons and vehicles on and off site.</li> </ul>
<b>OFF TRACK ACCESS</b>	<ul style="list-style-type: none"> <li>● Persons are advised to keep to footpaths</li> </ul>
<b>VEHICLE ACCESS:</b>	<ul style="list-style-type: none"> <li>● There is NO vehicle access onto the site except for the causeway.</li> </ul>
<b>UNEVEN GROUND</b>	<ul style="list-style-type: none"> <li>● This is a wildlife reserve and therefore prone to holes created by animals and naturally occurring uneven surfaces. Persons to be extra vigilant to avoid accidents.</li> </ul>
<b>CREW HOLDING</b>	<ul style="list-style-type: none"> <li>● Temporary Ezy-ups/marquees may be erected in less sensitive areas close to filming locations with the approval of the Reserve Manager. These will be areas of short heather/sparse vegetation. Protective boards may be required if there is a risk of damage to vegetation.</li> <li>● Do not 'dig' into the soil without consent. Use weights.</li> </ul>
<b>DRONES</b>	<ul style="list-style-type: none"> <li>● Permission to use a drone must be pre approved by the reserve manager</li> <li>● Specific safeguards must be met to minimise risk to the public and ecology.</li> <li>● Drone usage is subject to the migration / breeding / nesting of birds.</li> </ul>
<b>CLEANLINESS</b>	<ul style="list-style-type: none"> <li>● Production is responsible for removing all waste it creates whilst on site or a fee will be charged for cleaning and/or rubbish removal. Do not use owners' bins.</li> </ul>
<b>FIRST AID</b>	<ul style="list-style-type: none"> <li>● Production to have at least one 'appointed first aid person' on site at all times and report any incidents to NE.</li> <li>● Check your body for ticks and insect bites within 24 hours.</li> </ul>
<b>PERSONAL PROTECTIVE CLOTHING (PPE)</b>	<ul style="list-style-type: none"> <li>● Stout footwear and covered arms and legs is always recommended.</li> <li>● Crew should dress according to the weather forecast and prepare for adverse conditions.</li> <li>● Any PPE required will be supplied by the Production Company.</li> </ul>
<b>WORKING NEAR WATER</b>	<ul style="list-style-type: none"> <li>● All crew and personnel associated with the Production will be briefed of the dangers surrounding working on these Premises. This must be attached to the call sheet.</li> <li>● The Production crew must supply a H&amp;S RAMS and work within its guidelines.</li> <li>● The crew's H&amp;S personnel will need to brief all crew on the dangers of working near deep water ahead of commencing the shoot. There is a TW H&amp;S sheet to circulate.</li> </ul>
<b>ACCESS TO WATER</b>	<ul style="list-style-type: none"> <li>● Generally access into the water is not allowed.</li> <li>● Placing items into bodies of water will only be allowed if the recovery of the item is guaranteed and that it does not pollute the environment.</li> </ul>

## More information:

<https://lindisfarnennr.blogspot.com/>

<https://www.nationaltrust.org.uk/visit/north-east/lindisfarne-castle>

<https://www.lindisfarne.org.uk/>

<https://holy-island.info/lindisfarnecastle/2024/>

<b>Location Hire Fees</b> Minimum charges - subject to action and areas required VAT will be added to all fees	<b>1 to 20 on site</b>	<b>21 to 100 on site</b>	<b>ADMIN FEE</b>
Feature Film Large productions HETV	<b>12 hour day = £3,500</b> or £550 (first hour) £250 (per hour after)	<b>12 hour day = £4,000</b> or £600 (first hour) £335 (per hour after)	£400
Commercial Advertising - motion TV Drama Pop promo	<b>12 hour day = £3,000</b> or £500 (first hour) £250 (per hour after)	<b>12 hour day = £3,500</b> or £550 (first hour) £300 (per hour after)	£350
Photoshoot - commercial Viral advertising / online content Light Entertainment Reality TV Short Films	<b>12 hour day = £2,500</b> or £450 (first hour) £200 (per hour after)	<b>12 hour day = £3,000</b> or £500 (first hour) £250 (per hour after)	£300
Documentary Photoshoot - editorial Corporate Films	<b>12 hour day = £1,500</b> or £250 (first hour) £125 (per hour after)	<b>12 hour day = £2,500</b> or £450 (first hour) £200 (per hour after)	£250
Student Low budget Charity	<b>12 hour day = £1,250</b> or £210 (first hour) £105 (per hour after)	<b>12 hour day = £1,500</b> or £250 (first hour) £125 (per hour after)	£200
News / Magazine TV (Springwatch etc)	<b>12 hour day = £250</b>		£150
Vehicle parking / Unit Base	<b>24 hour access = £15 per car space</b>		£250

## OTHER FEES

NE Staff fees	£50 per hour [0700 to 1900] or £75 per hour [1901 to 0659]
Ecologist	Individual rates approx £400 per day
NE on camera consultancy	£150 per hour
Damage Deposit	May be requested. It ranges from £500 to £10,000 depending upon your intentions and impact to the NNR.
Footage of starling murmuration	£500
Hire of NE equipment	Gators £100 per day