

SITE INFORMATION DOCUMENT - RESIDENTIAL

The Production must always:

- supply evidence of Public Liability Insurance with a minimum cover of £5 million.
- Produce a Health and Safety Risk Assessment to cover the action on site.
- Pay the location hire fee before the first day of access.
- Pay a Damage Deposit ranging from £500 to £10,000 based on the amount of areas accessed/type of property/length of time on site.

When filming on site Production is expected to:

- Never remove, cover or block emergency signage.
- Remove all waste it creates at the end of each day and within the times of hire period. (Additional charges may occur if premises are not left in satisfactory condition).
- Supply security personnel to man the doors to the premises at all times.
- Not to cover smoke detectors without consent and then to ensure they are uncovered after the shot.
- Supply personnel to check the location with the owner after the shoot and complete the Sign Off Sheet.

Terms

- Cancellation fees are 100% if cancelled after both parties have signed the Location hire Agreement.
- Power is not charged unless production uses over 100 units. Meter readings must be taken.
- Film days are 12 hours - Photoshoot days are 10 hours - Unit base is up to 24 hours

Disclaimer: All data, imagery, and information is provided without warranty or any representation of accuracy, timeliness or completeness. The content of the information is solely a guideline and is subject to constant change.

DESCRIPTION OF PROPERTY

A secluded, timber-clad home set back from the road behind a canopy of trees. Open plan main space and 3 bedrooms. Garden with double pond, overlooking fields. (floor plan below)

PROPERTY

Number of bedrooms	3
Number of floors	1
Outdoor areas	1 acre garden, front lawn woodlands overlooking fields
Lift on site	no
Number of toilets on site	2
Number of kitchens on site	1
Production may cook in the kitchen	yes
Electrical supply on site	domestic
Heating	Yes / wood burner (very well insulated)
Noise from schools/transport	no
WiFi	yes
Garage /outhouse can be used	none
Basement /cellar can be used	none
Floor covering required	If making a mess

Specific H&S or PPE requirements	standard
Directional signage can be put up	At entrance yes, but not to annoy neighbours

HOUSEHOLD

Are willing to move out	yes
Neighbours do need informing	no
Restrictions due to religious beliefs, allergies, phobias etc	no
Tenants Residents Association or Property Management Company	no
Local Council	Chichester

ACCESS

Site visit requirements:	Phone / keysafe
Permitted hours of access	9-9
Areas off limits	na
Width / height restriction	na
Disabled access	na
Max persons on site	na
Site visits are charged for	na
Require to remove shoes	yes
Other restrictions	na

SET DRESSING can production...

Move furniture	Yes, as long as fix any repairs
Drill, nail, stick or fix	Yes, as long as fix any repairs
Paint	Yes, as long as fix any repairs
Dig / excavate	Yes, as long as fix any repairs

LIGHTING is there...

Black out	no
Control of lights	electric
Lighting from outside	na

VEHICLES is there

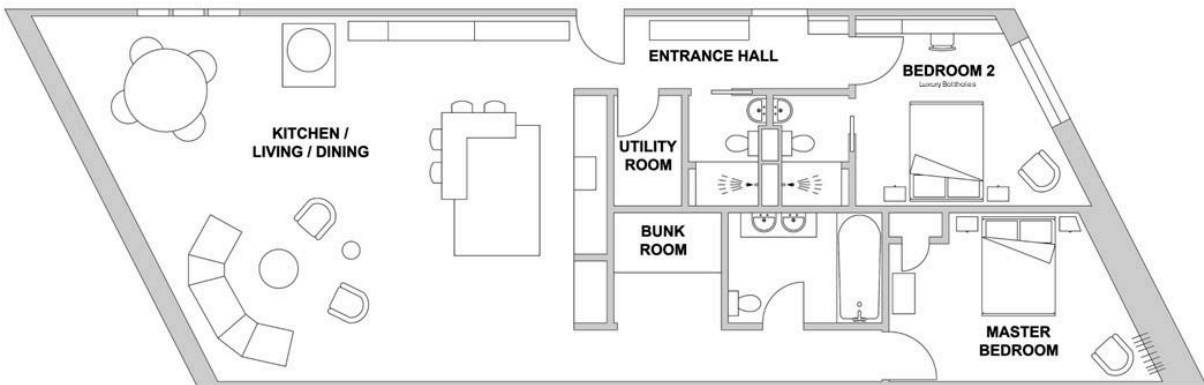
Parking on site	Yes 5+ cars
-----------------	-------------

Parking nearby	On roadside / ask neighbours manor house
Unit Base nearby/on site	na
Speed limit on site	Uk law

OWNER WILL CONSIDER ALLOWING

Animals on site	yes
Nudity	yes
Smoking	Not inside
Snow / Rain / Wind effects	yes
Immoral content / Drug scenes	yes
Drones	yes
Haze / Smoke effects	yes
Crew/cast to stay overnight	yes
Naked flame	Under controlled environment as its made from wood

Other Notes	
-------------	--



TOTAL APPROXIMATE AREA
812.99 sq. ft.
(75.53 sq. m)